



Cleantech Resource Strategy

Short presentation for DF 55

swisscleantech
Thunstrasse 82
3000 Bern

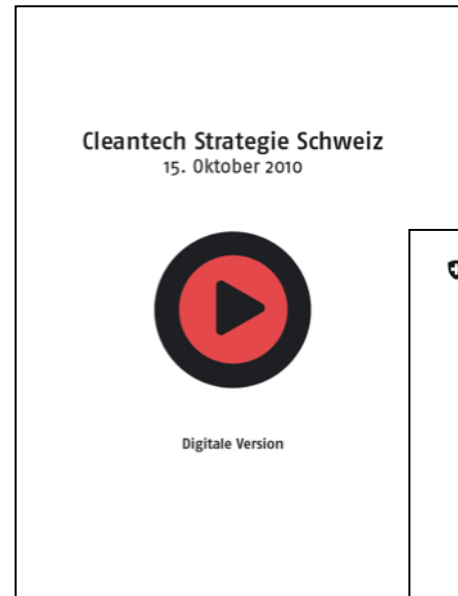
Tel: +41 58 580 0808
Fax: +41 58 580 0801

Hans-Jörg Althaus

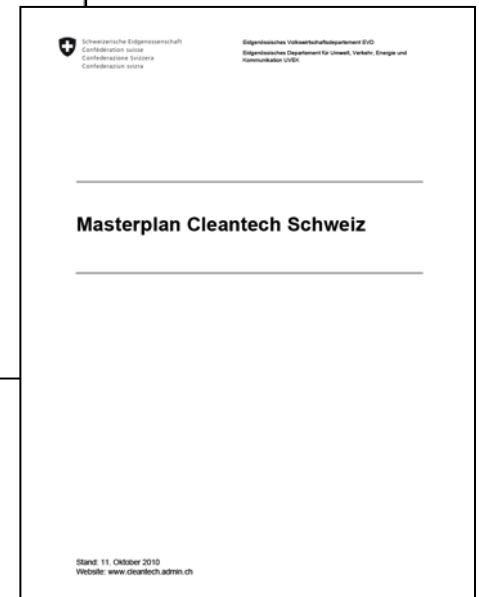
swisscleantech

Swiss Voice of the Green Economy

- **Business Association**
- **Sustainability:** Opportunity (not Problem, part. for CH)
- **Logic:** Winning majority for Sustainability
- **Need:** Facts > Vision > Lobby
- **Focus:** First CO₂, Energy, Resources & more!



swisscleantech,
10/2010



Swiss Government,
11/2010

swisscleantech Membership

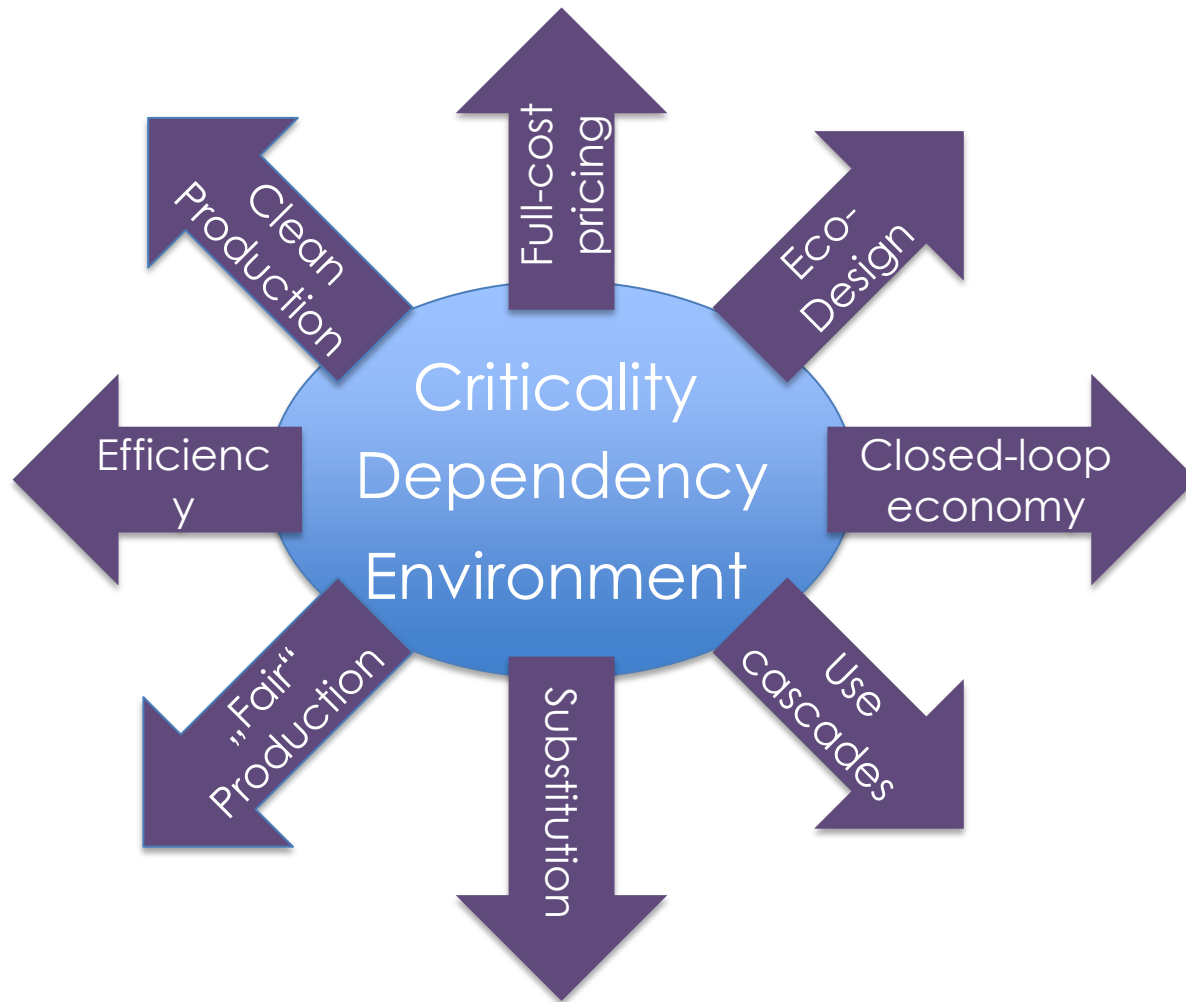
Relevant policy force (300->500, 20->50)



The use of abiotic natural resources will rise



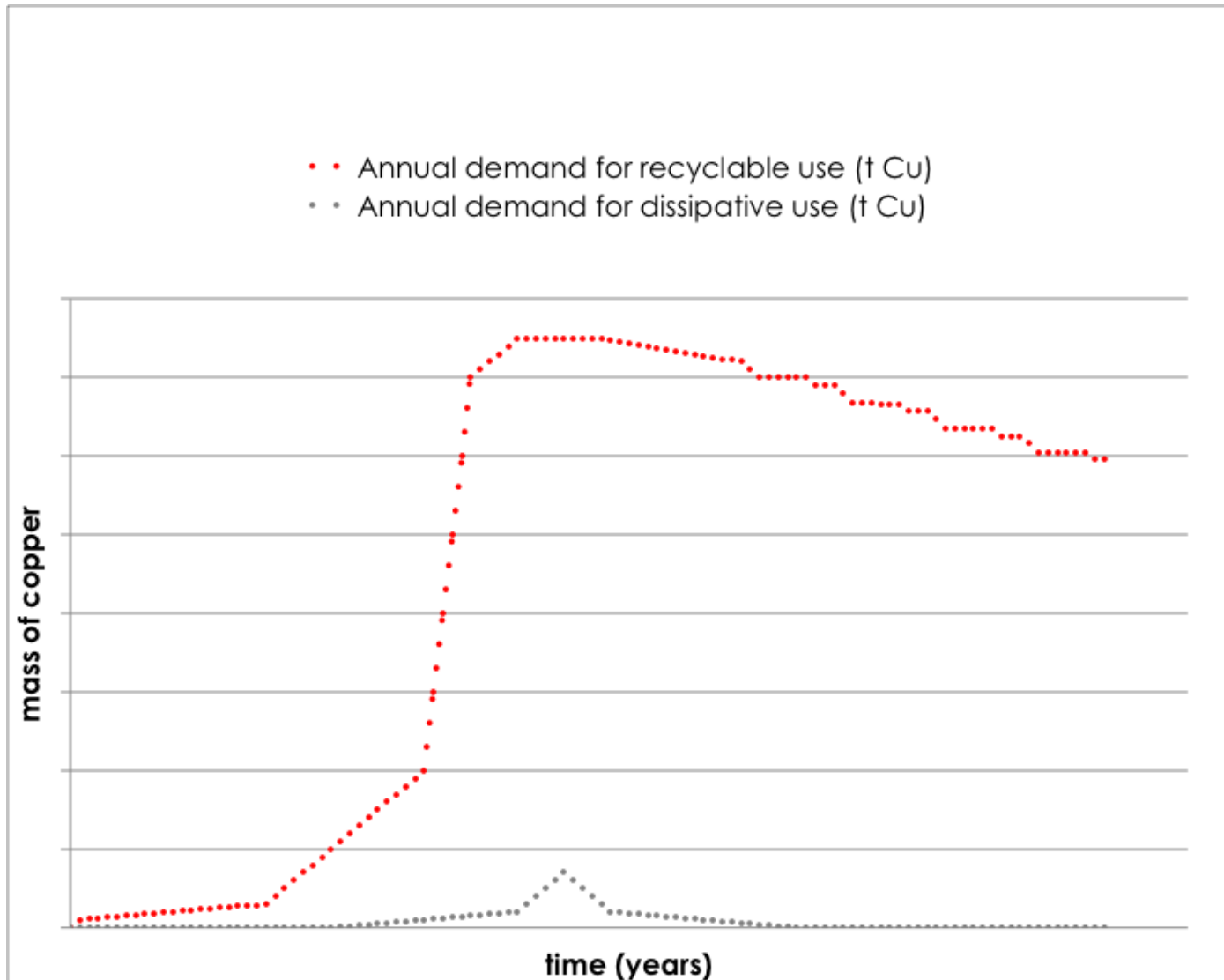
Problem areas of resource use and concepts for sustainable resource use



LC Models and indicators should make sense for those concepts!

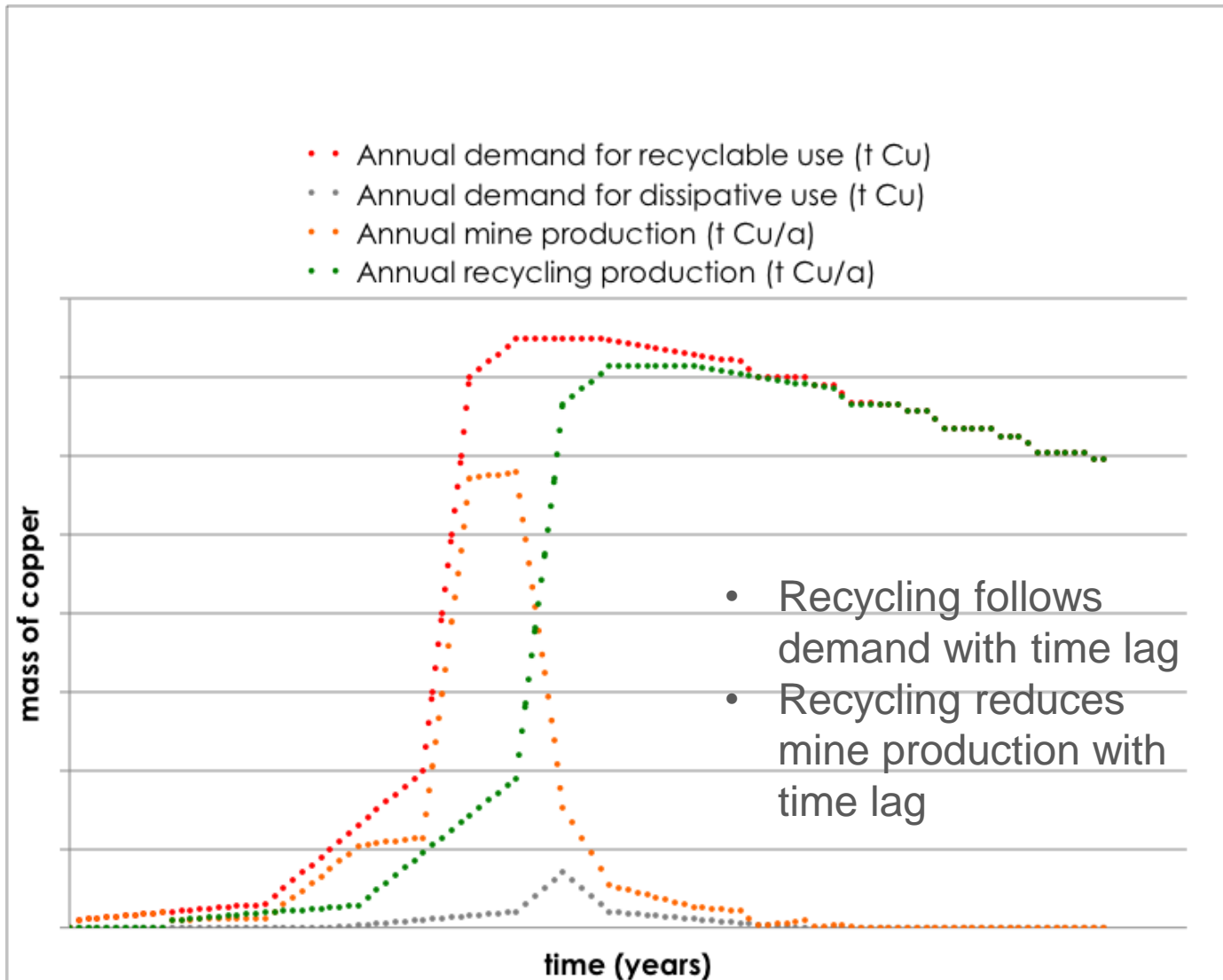
Assessment of abiotic resource use

Use of copper



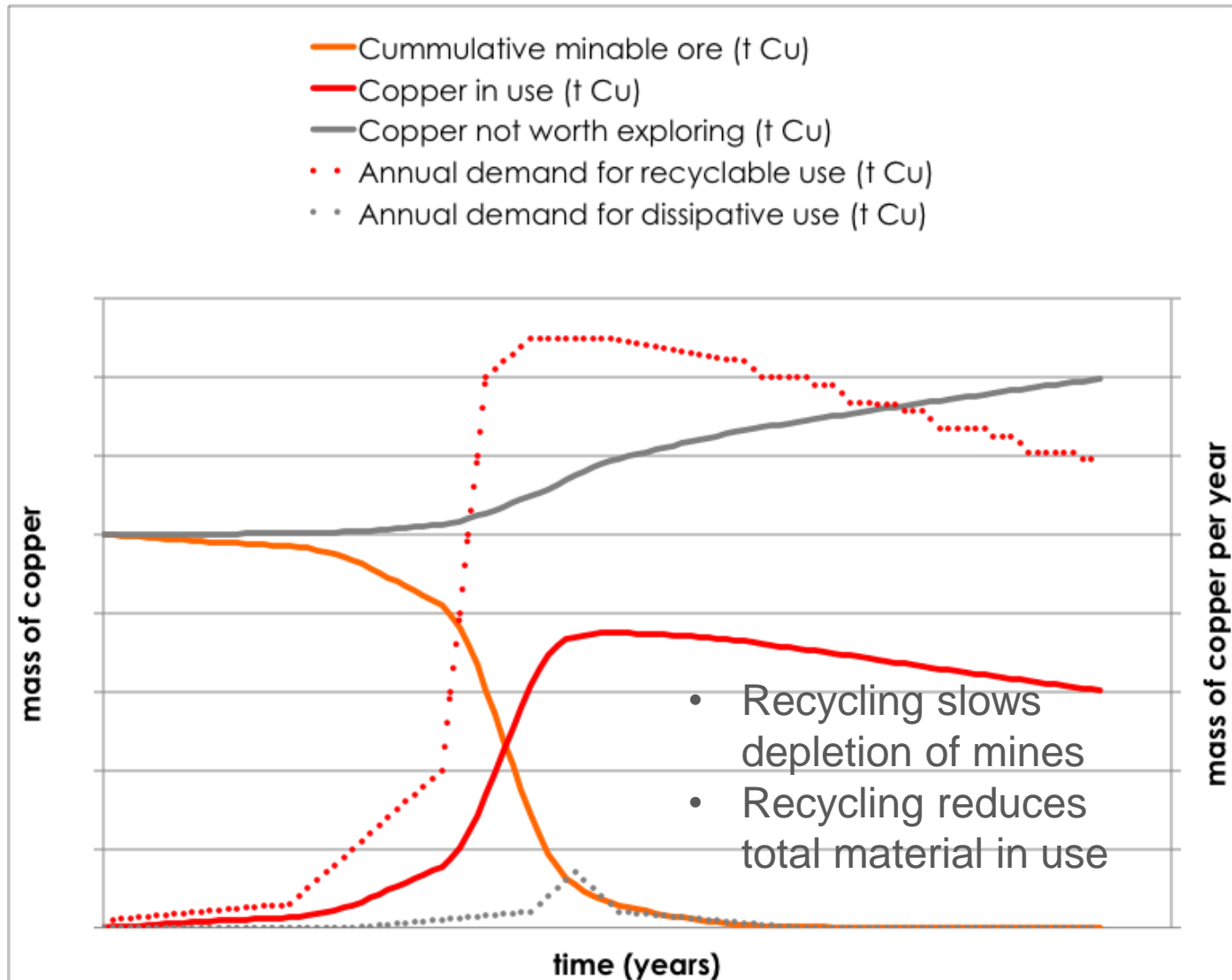
Assessment of abiotic resource use

Use of copper



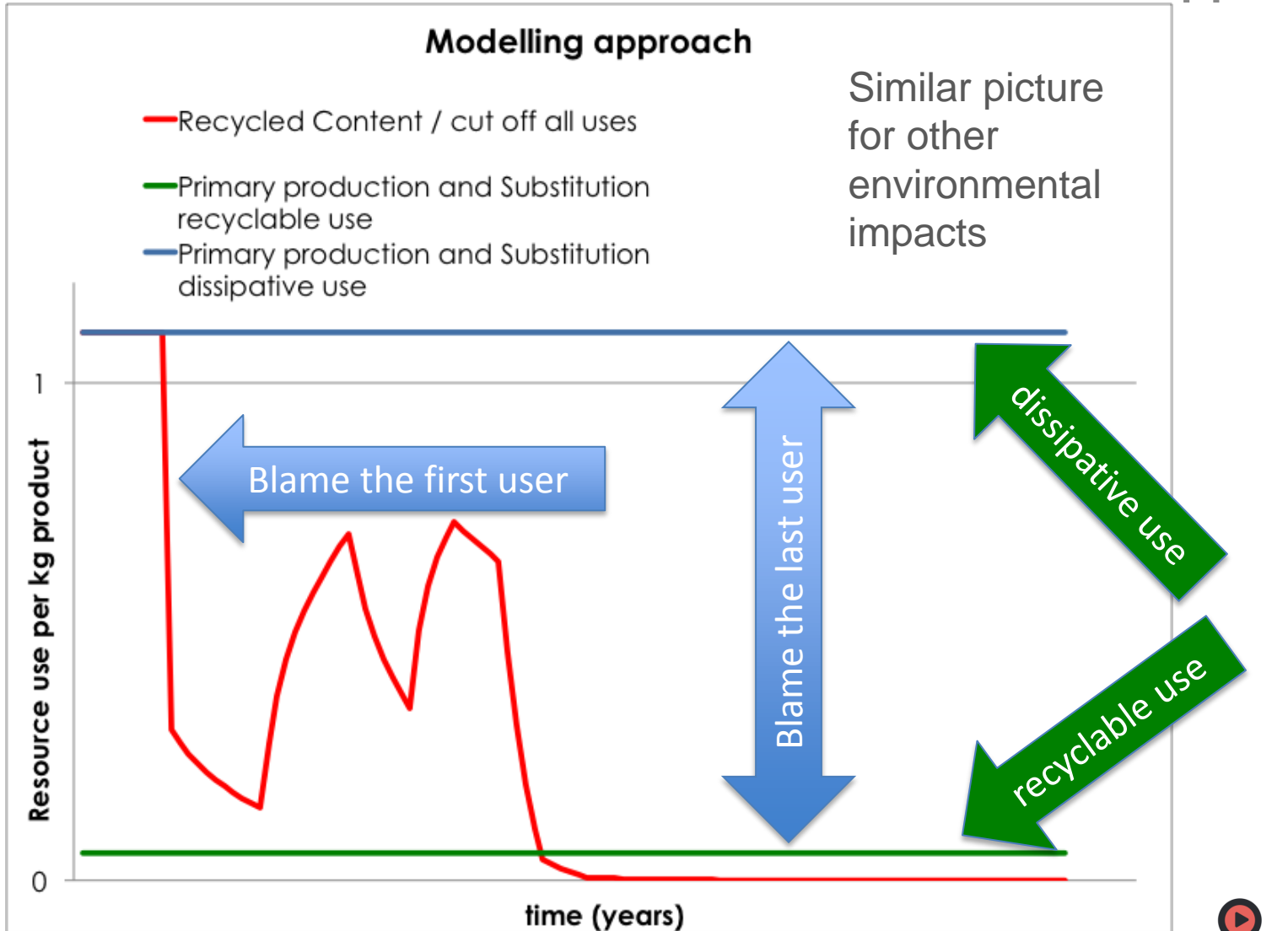
Assessment of abiotic resource use

Use of copper



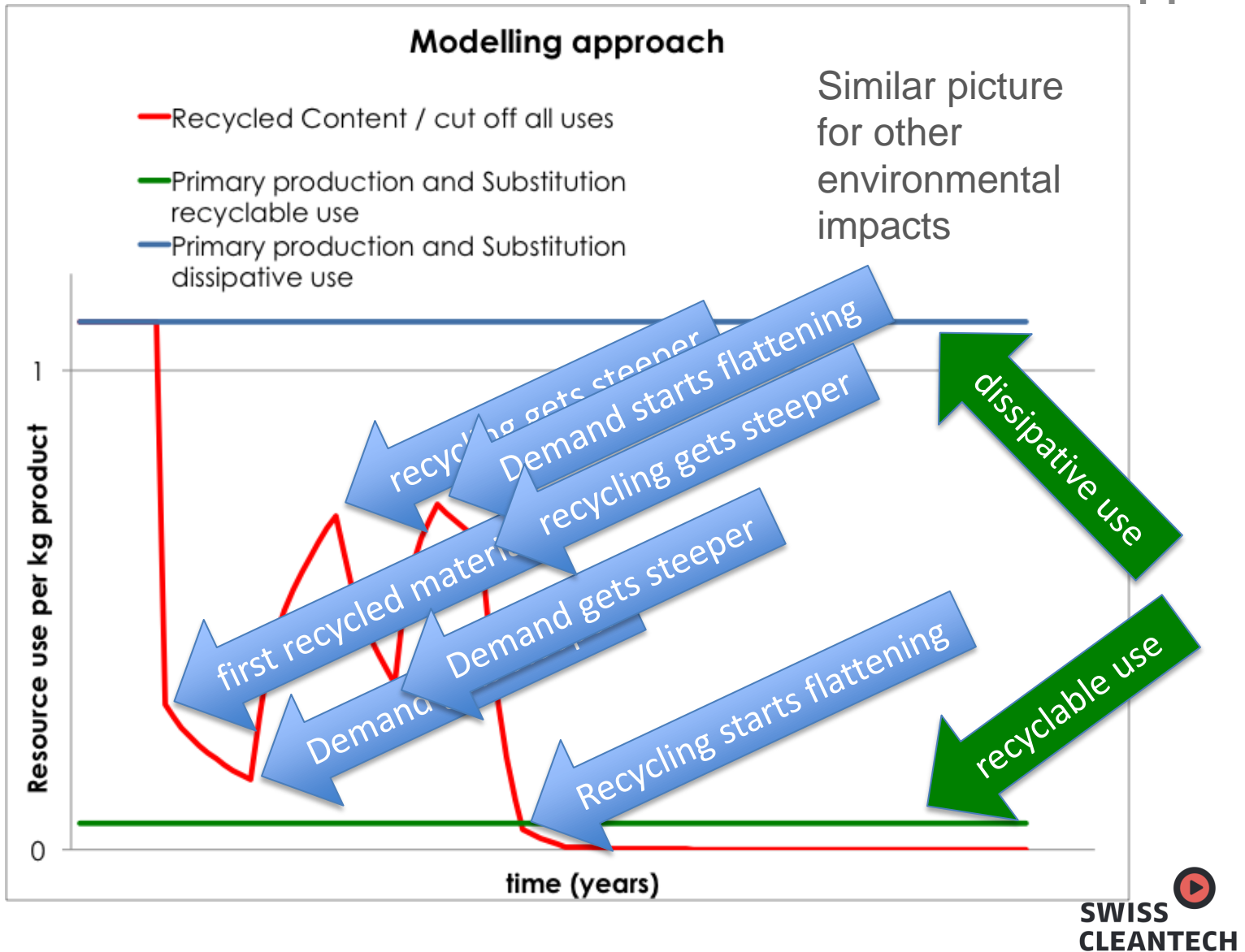
Assessment of abiotic resource use

Use of copper



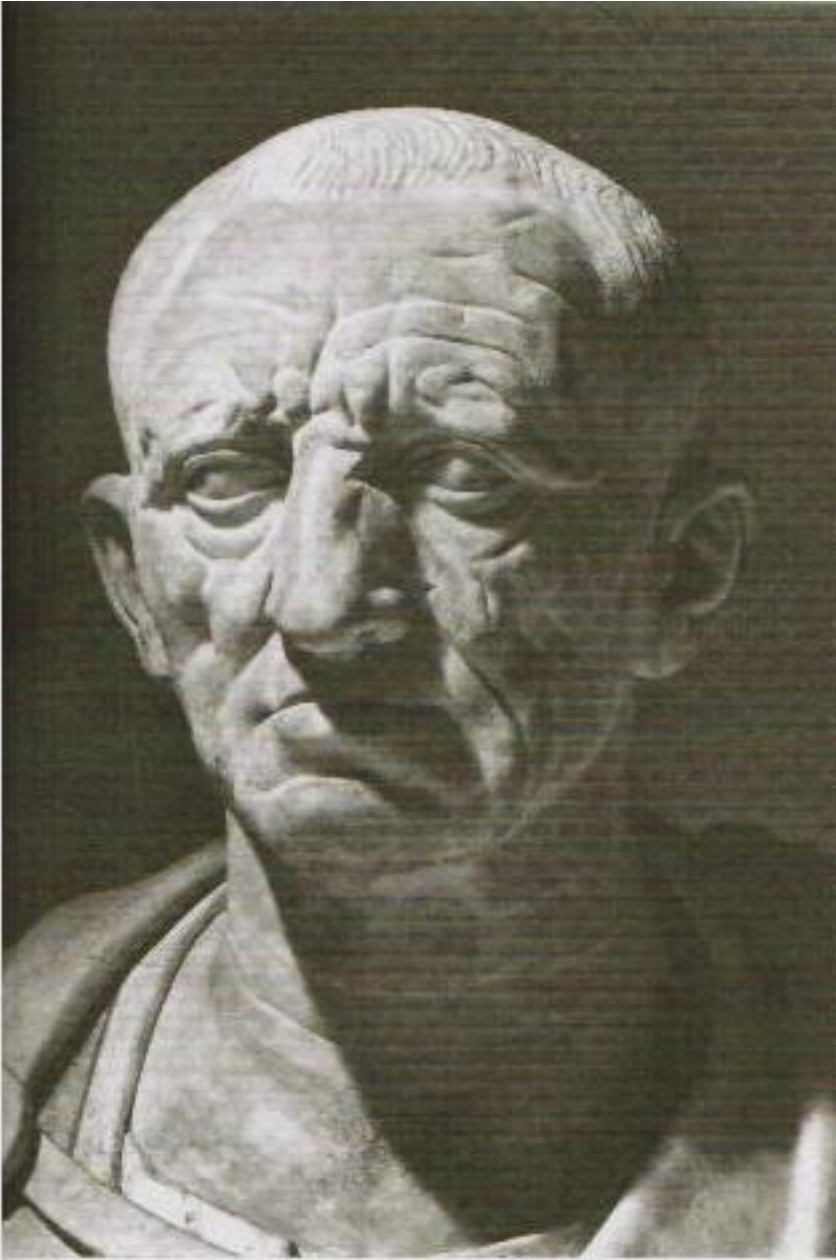
Assessment of abiotic resource use

Use of copper



How to overcome the problem?

- **Model “resource use” and “resource transformation” separately and develop corresponding IA methods.**
 - Transformation from rich metal oxide or sulphide in ore to metal product → gain in resource quality
 - Transformation from rich metal oxide or sulphide in ore to diluted metal in nature → loss in quality
 - Transformation from Product to scrap → loss
 - Transformation from scrap to product → gain
 - Use of material over time → loss in resource quality (availability is part of quality)

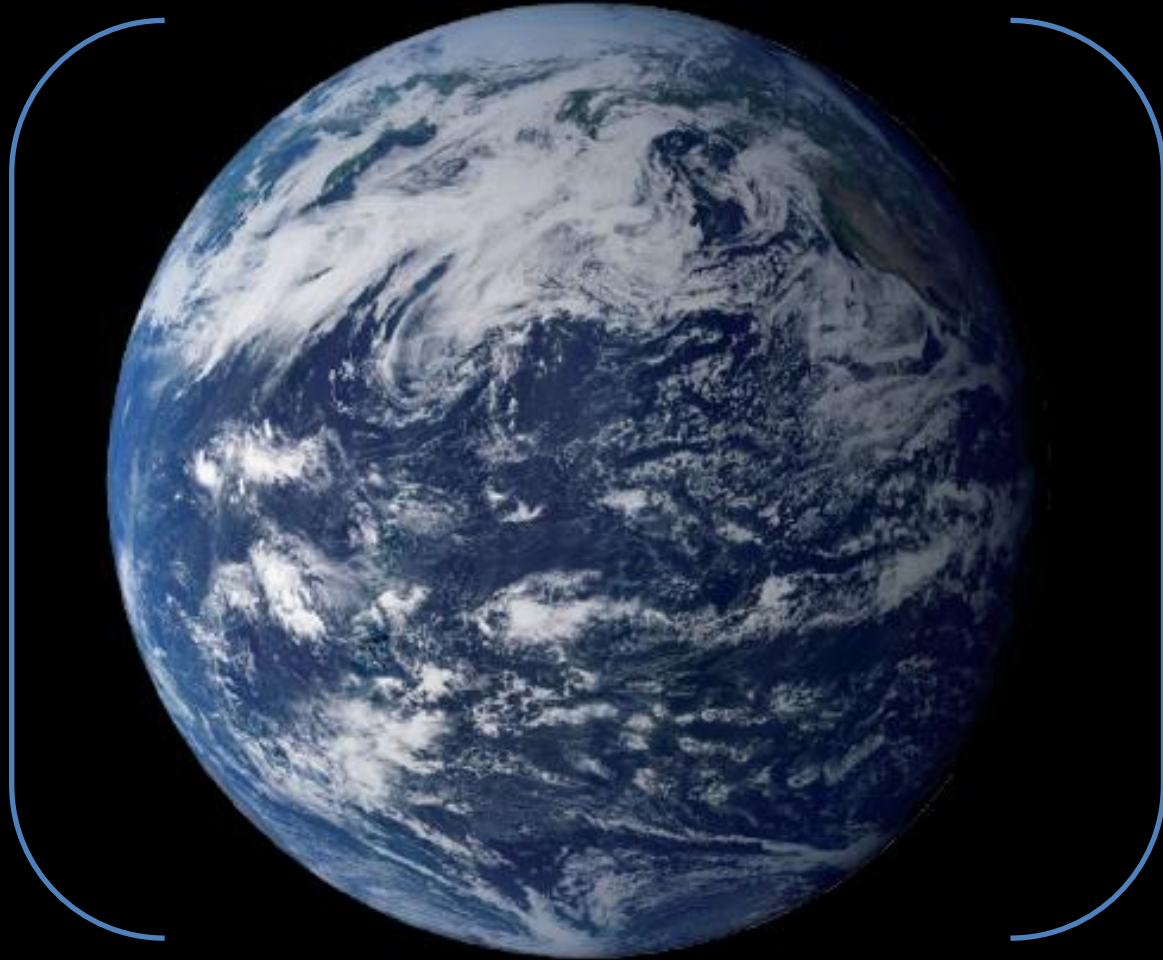


Ceterum Censeo...

- **Get rid of cut-off's in LCI Models:**
 - It is easy to calculate results with a cut-off approach in models including comprehensive information but not vice versa!

Thank you!

TOO BIG TO FAIL



www.swisscleantech.ch

Thank you!

Document Information

Author

swisscleantech
Hans-Joerg Althaus
Thunstrasse 82
3000 Bern

Tel: +41 58 580 0808
Fax: +41 58 580 0801

Document

Name: swisscleantech_Althaus_DF55.pptx/pdf
Update: 10.4.2014

Disclaimer

The information contained in this document is confidential and privileged. This document and the information contained herein may not, in whole or in part, be copied, reproduced, distributed, or otherwise made available to any other party and under any circumstances without prior written approval of the Foundation for Global Sustainability (FFGS) and the swisscleantech Association ("SCA"). While FFGS and SCA have exerted great care and diligence with respect to the contents of this document, it makes no representation or warranty as to the accuracy or completeness of the information contained in, or for any omissions from, this document or any other written or oral communications transmitted to the recipients.